


RubyMine Enoki EAP (build 124.305) Release Notes

 Download the latest available EAP build from [RubyMine EAP](#) page.

IDE

- TextMate bundles syntax highlighting support

Ruby

- Remote interpreters
- Exit points highlighting
- %i syntax support
- Gem dependency diagram

Rails

- Named scopes renaming

JRuby

- TorqueBox run/debug support. See prerequisites [RUBY-9177](#)
- Trinidad debugging support. See prerequisites [RUBY-11456](#)

Tests

- New minitest ($\geq 3.1.0$) support
- New rspec-rails ($> 2.12.0$) support

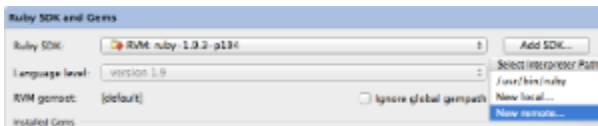
Bug Fixes

- Bug fixes

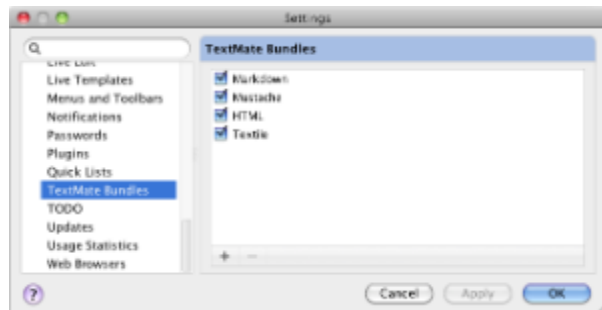
Known Issues

- Problem with adding remote native sdk

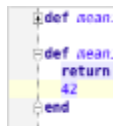
RubyMine Enoki EAP (build 124.305) New Features Screenshots

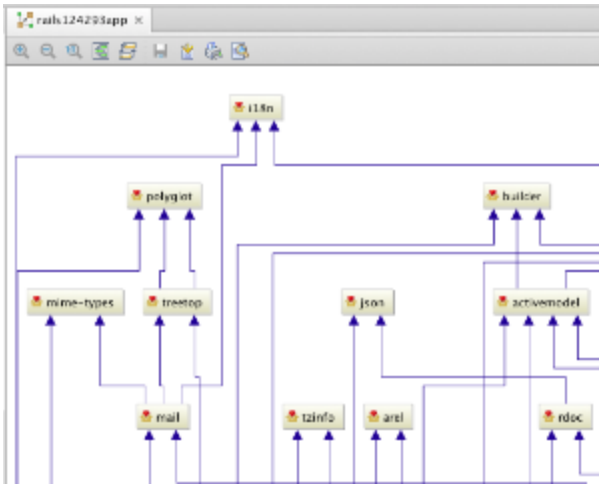


Add Remote Interpreter

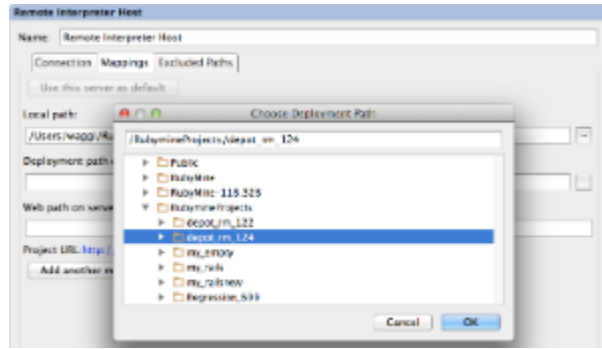


TextMate Bundles Setting



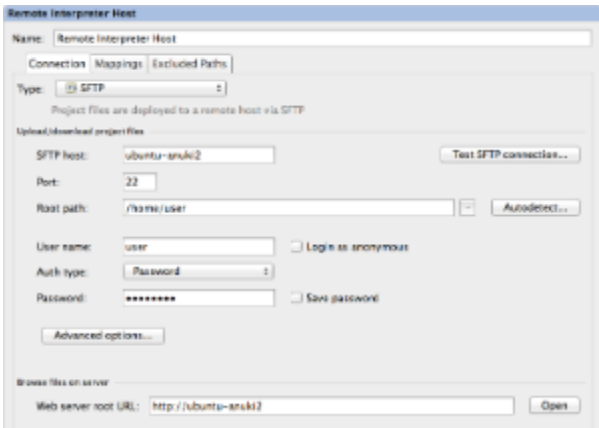


Gem Dependency Diagram

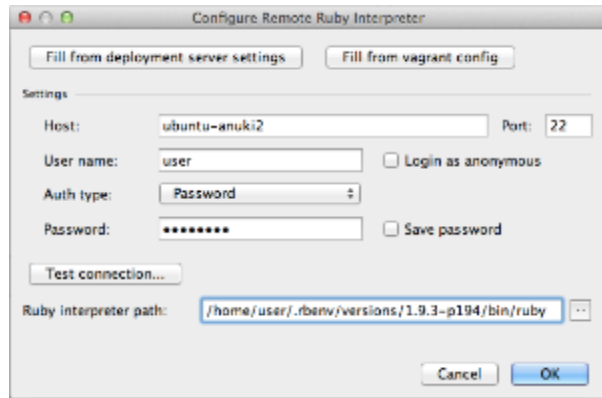


Choose Remote Deployment Path

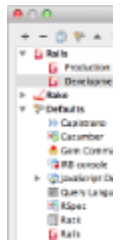
```
testing.md
# This is
# This i
##### T
1. Bird
2. McHal
3. Paris
This is l
[This lir
*single z
_single i
*double
_double
```



Configure Remote Deployment Host



Configure Remote Ruby Interpreter



TorqueBox Running Application