
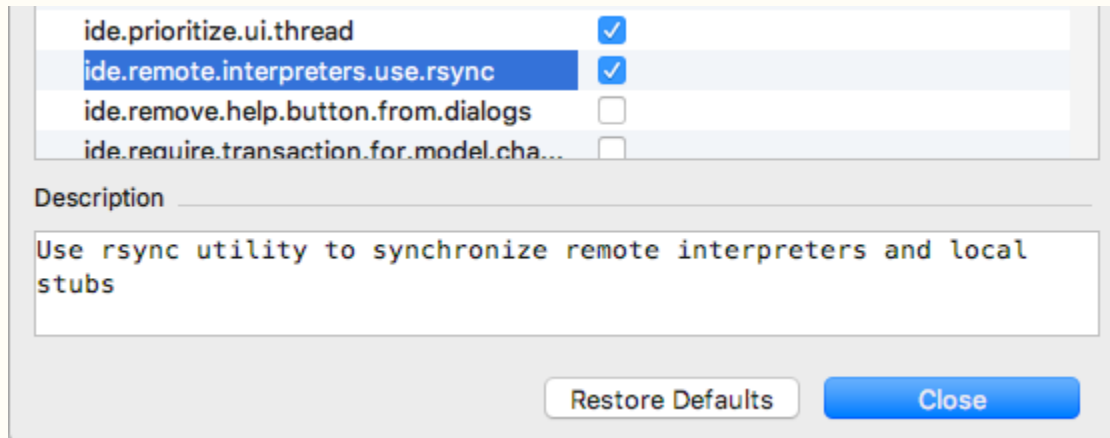


Faster Remote Gem Downloading with Rsync

rsync_install.png

Starting with 2016.3 RubyMine uses `rsync` utility to speed up gem downloading in case remote interpreters are configured for an application.

 Rsync is used by default while gem downloading if it is installed on a local machine. To switch it off please uncheck Registry option 'ide.remote.interpreters.use.rsync':

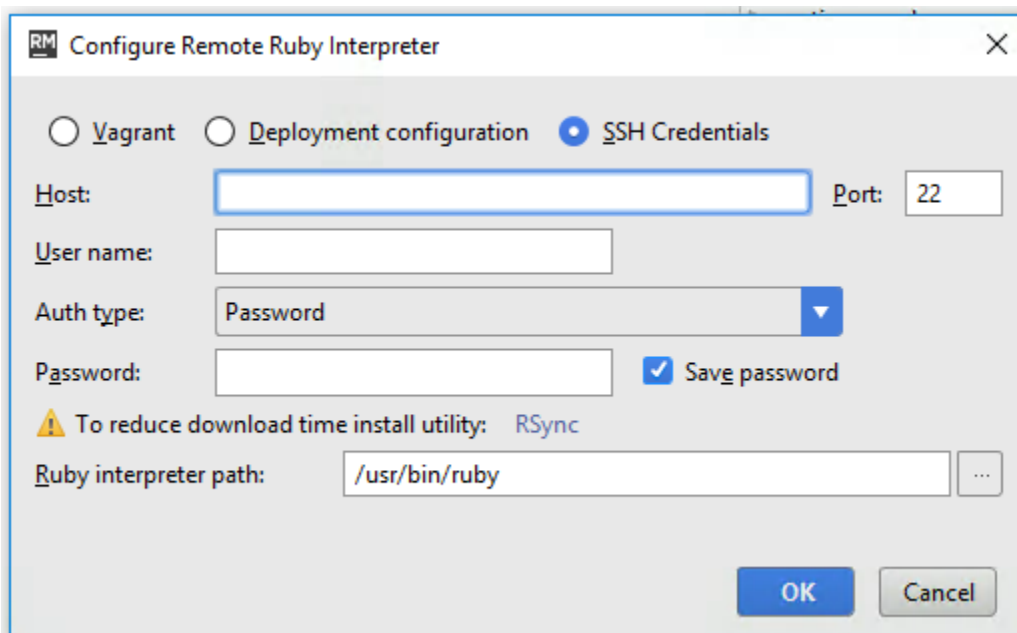


- Gem downloading with rsync
- Installing rsync
 - Linux
 - OS X
 - Windows

Gem downloading with rsync

No matter you use a prepared Deployment configuration or SSH credentials to set up a remote Ruby interpreter configuration, `rsync` is being used. When setting up with SSH credentials we recommend to use certificates by choosing 'Key pair (OpenSSH or PuTTY)' in Auth type field. You can also provide a password by choosing 'Password' accordingly. When password is provided, RubyMine emulates Terminal to use it (the command looks like: `rsync -zarv user@host:/remote/path /local/path`).

RubyMine informs you if `rsync` is not installed on a local machine:



Installing **rsync**

Linux

```
sudo apt-get -y install rsync
```

OS X

Rsync is installed by default.

Windows

Windows: can be used on Windows systems but is only available through various ports (such as [Cygwin](#)).