

Working with Scala Worksheet



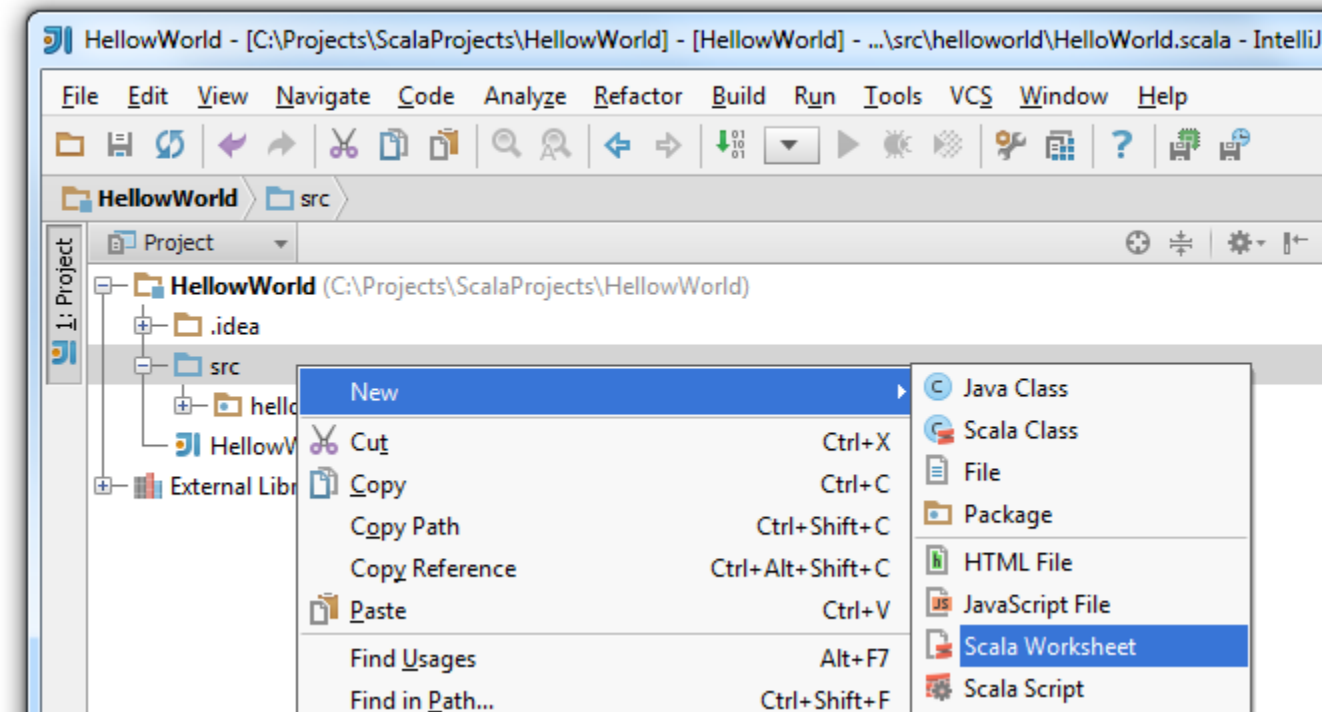
Redirection Notice

This page will redirect to <https://www.jetbrains.com/help/idea/working-with-scala-worksheet.html>.

IntelliJ IDEA lets you create a Scala worksheet that enables you to evaluate your Scala code results in a special view of the Scala editor.

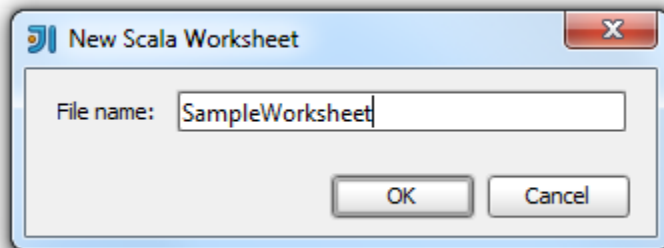
1. Creating Scala Worksheet

To create a Scala Worksheet, right-click on your project and select **New Scala Worksheet**:




It is recommended to create your worksheet in `src` directory to simplify an inclusion of the project's classes in the classpath. That might be helpful for testing purposes.

In the **New Scala Worksheet** window type a name of your Scala worksheet and click **OK**.

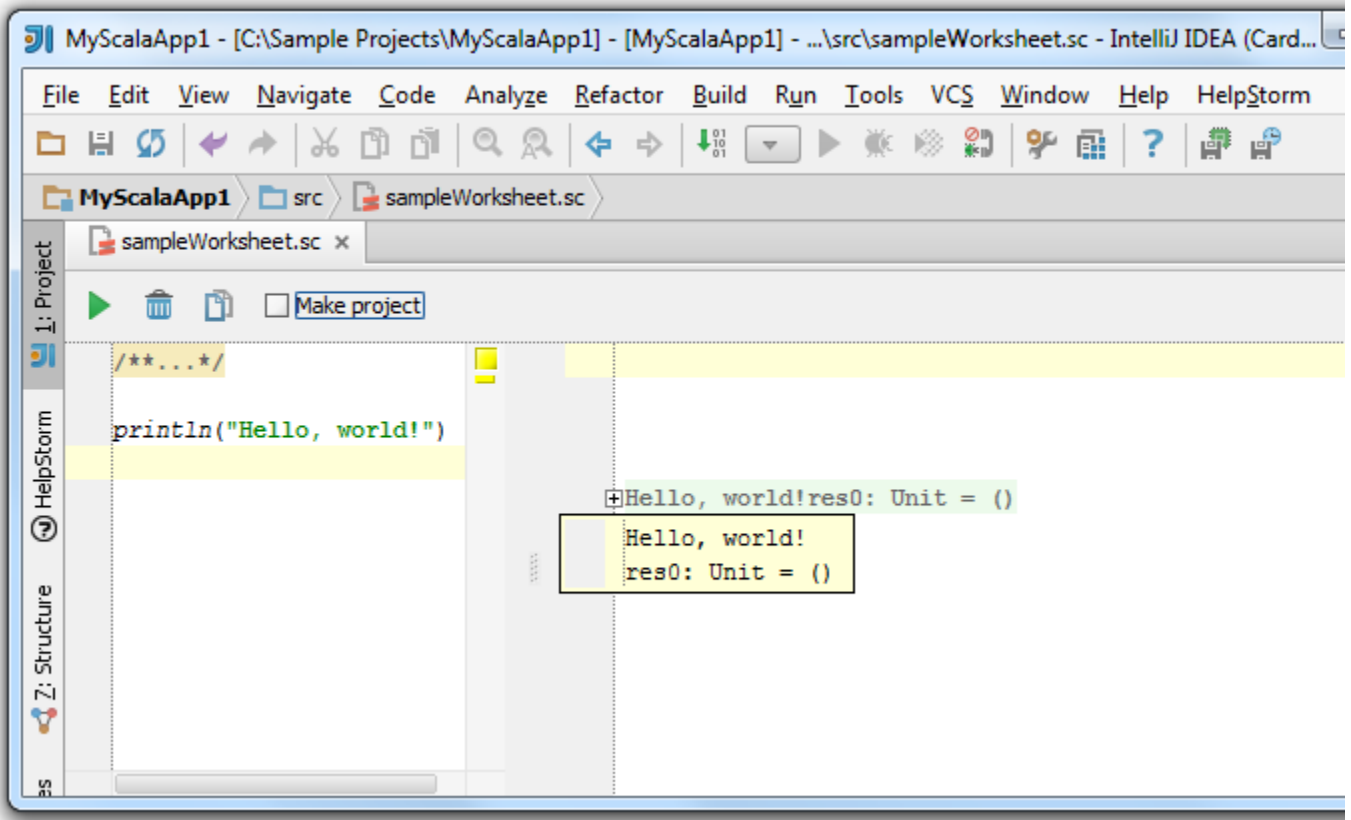


As a result, a file with `.sc` extension opens. Now you can enter your code.

2. Running Scala Worksheet

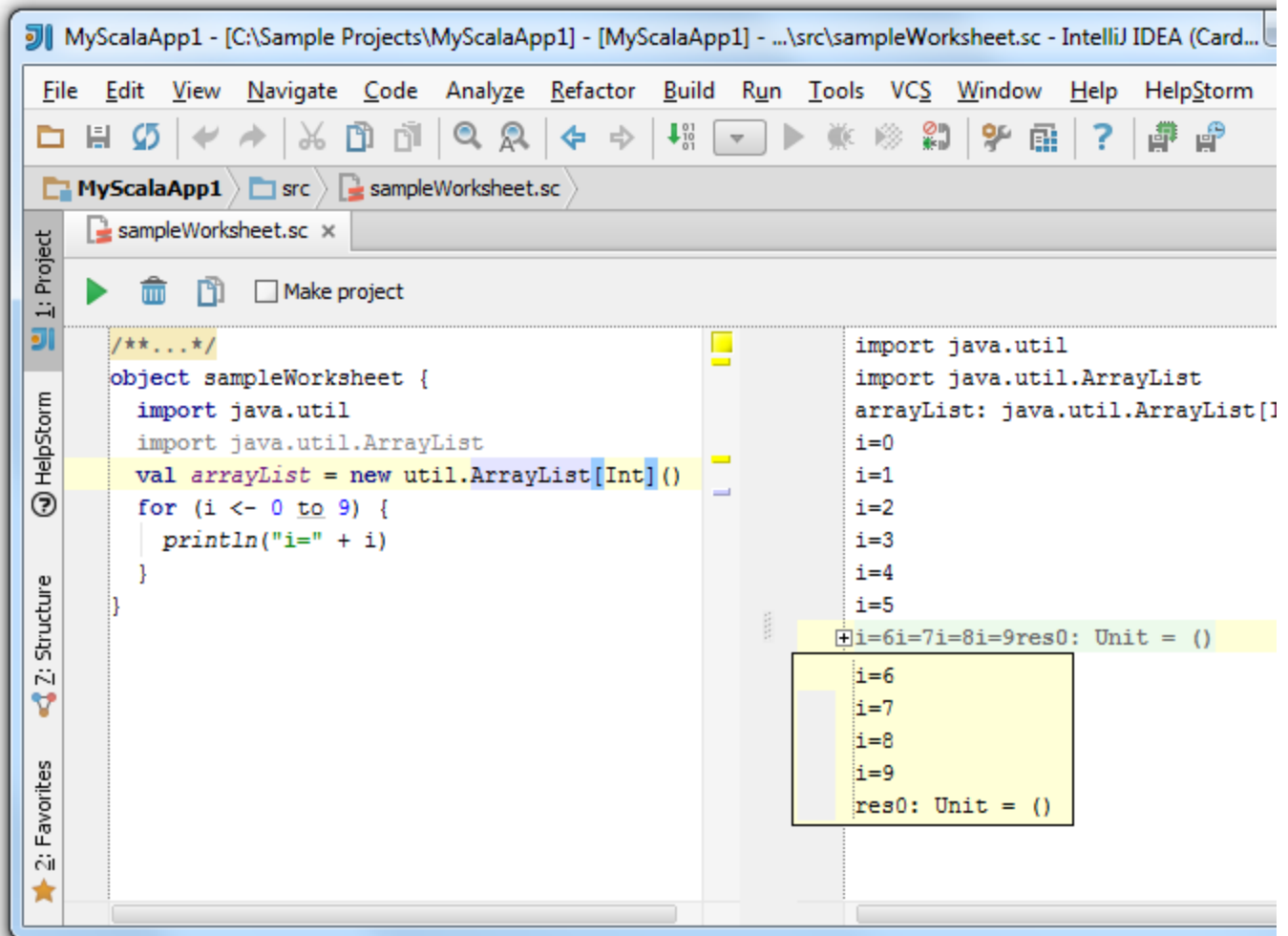
You can enter your code and press  to see the results. You can clear the **Make project** checkbox to improve evaluation

performance. In this case, the automatic checking of project's changes is disabled.

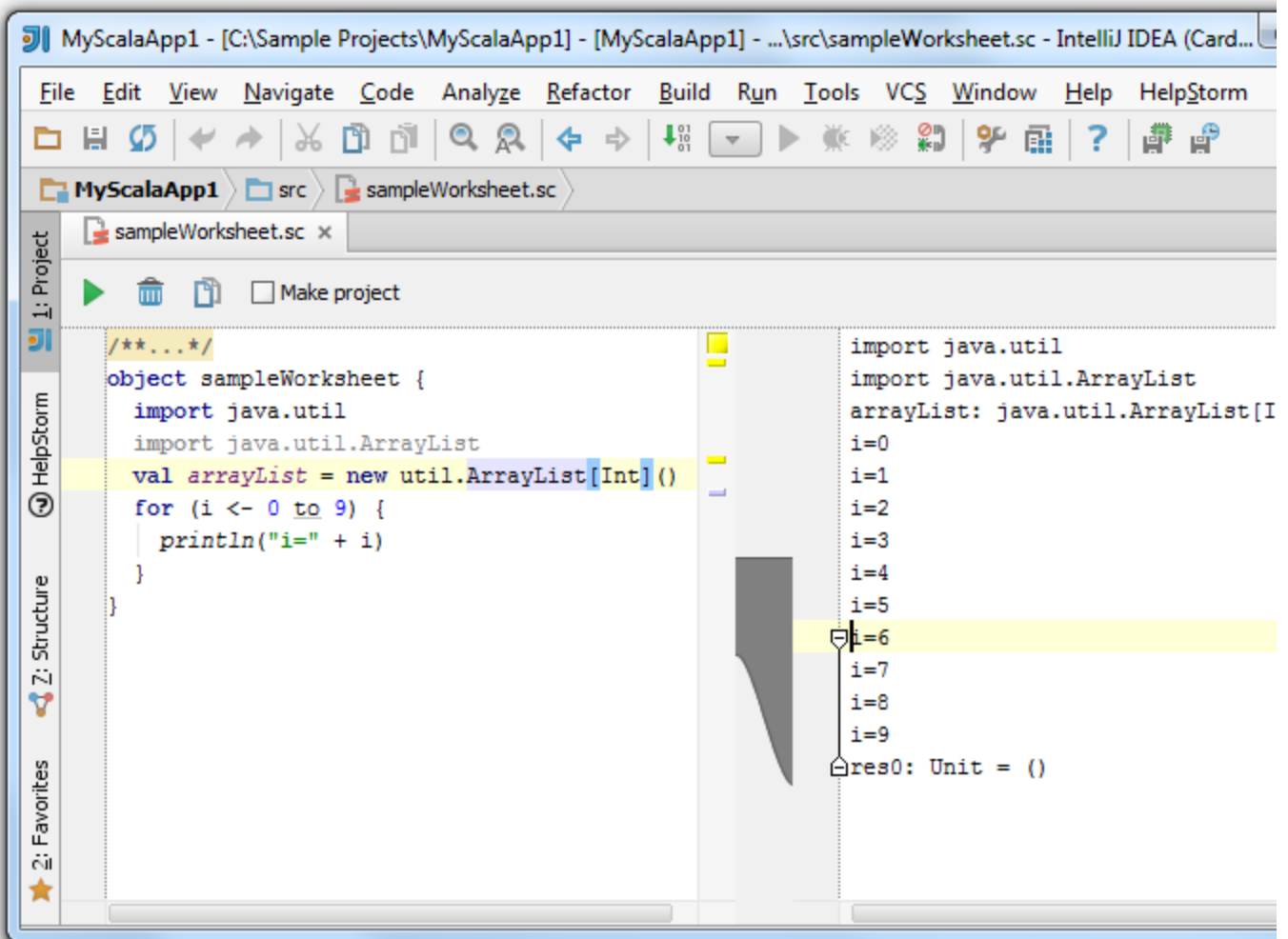


The results appear in the view on the right side of your code.


A Scala object could be also evaluated. Let's see the following code and the results:




You can fold the output without affecting your code on the left side and expand only that block output that matches a specific statement.

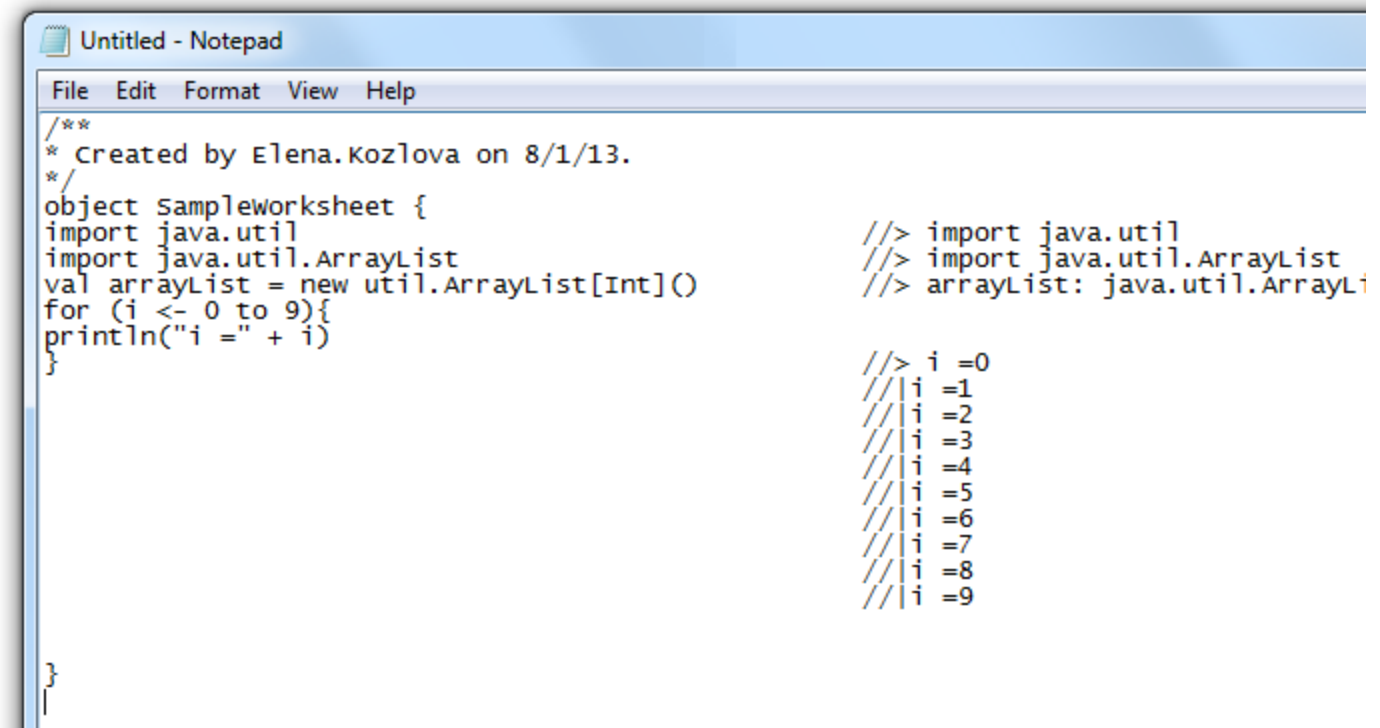


3. Removing Worksheet's Results

You can remove the worksheet's results easily by pressing  icon.

4. Copying Actions

You can easily copy your code and evaluation results into one file by clicking  icon.



Untitled - Notepad

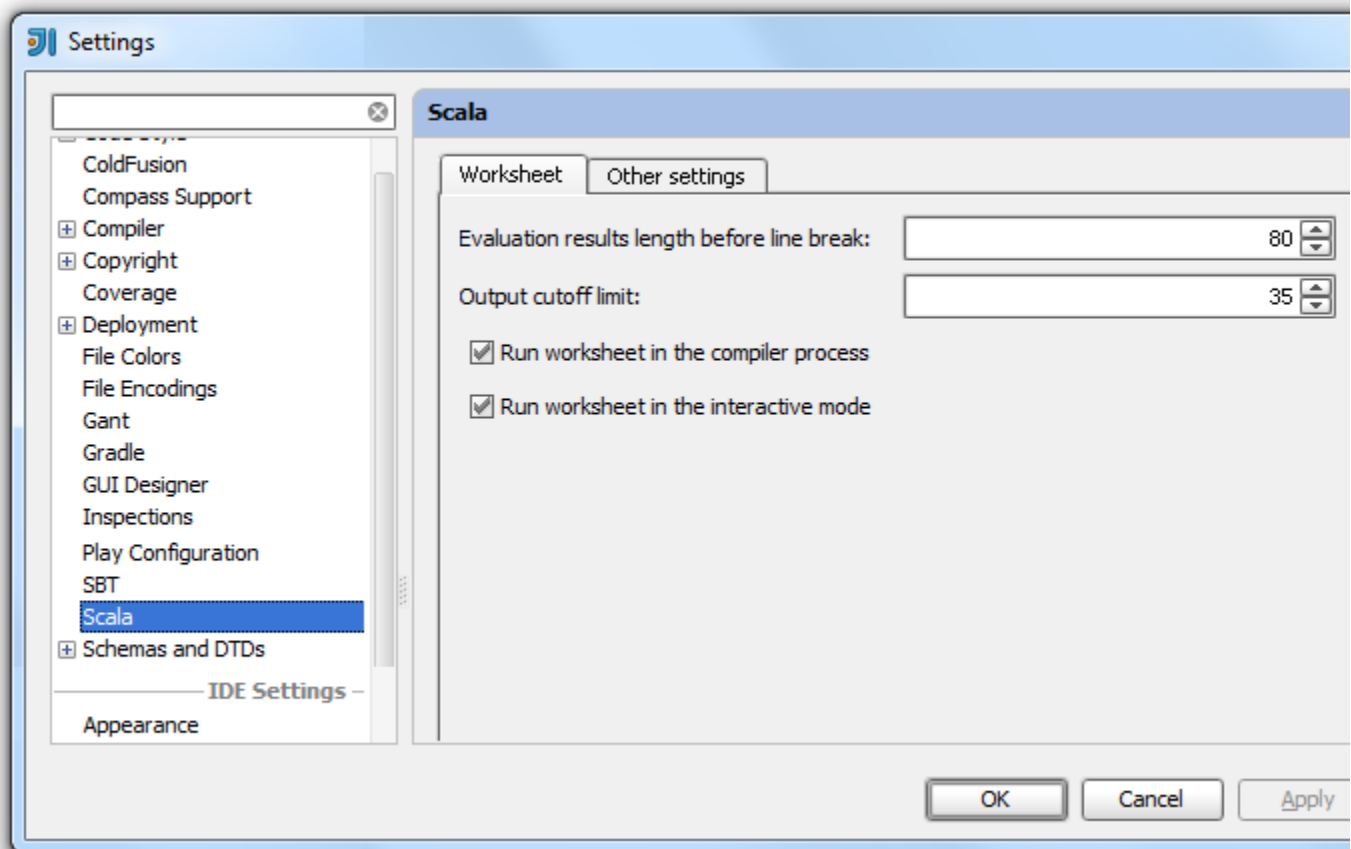
```
File Edit Format View Help
/**
 * Created by Elena.Kozlova on 8/1/13.
 */
object Sampleworksheet {
import java.util
import java.util.ArrayList
val arrayList = new util.ArrayList[Int]()
for (i <- 0 to 9){
println("i =" + i)
}
}
```

```
//> import java.util
//> import java.util.ArrayList
//> arrayList: java.util.ArrayLi

//> i =0
//> i =1
//> i =2
//> i =3
//> i =4
//> i =5
//> i =6
//> i =7
//> i =8
//> i =9
```

5. Configuring Worksheet Settings

You can configure your worksheet's settings by selecting `FileSettingsScala`, on the main menu, and clicking `Worksheet` tab.



On the Worksheet tab, you can set the length for the line break of your results and the output cutoff limit. You can also configure in what mode you want to run the worksheet.