

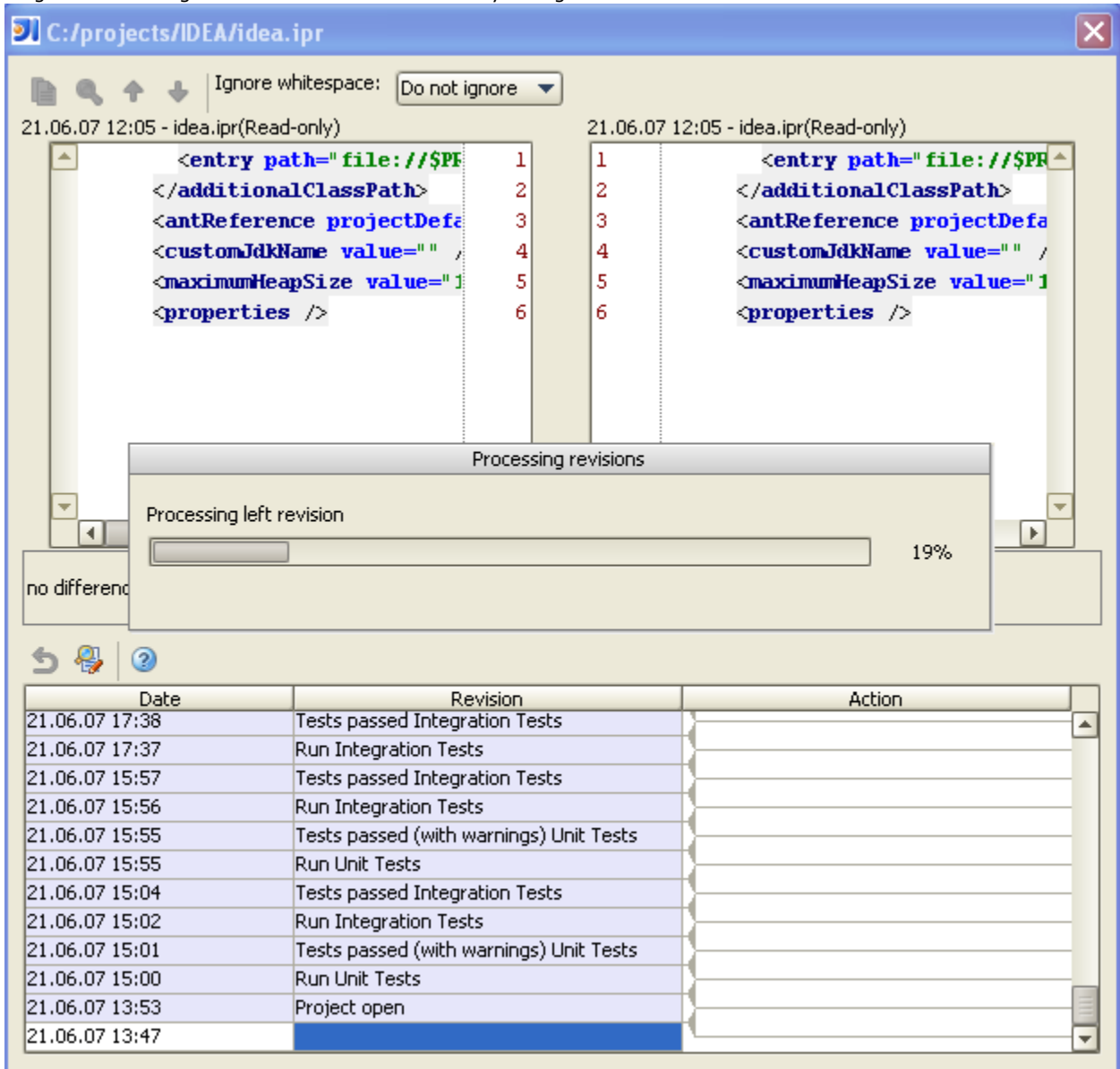
EAP 7027 Release Notes

Maven integration

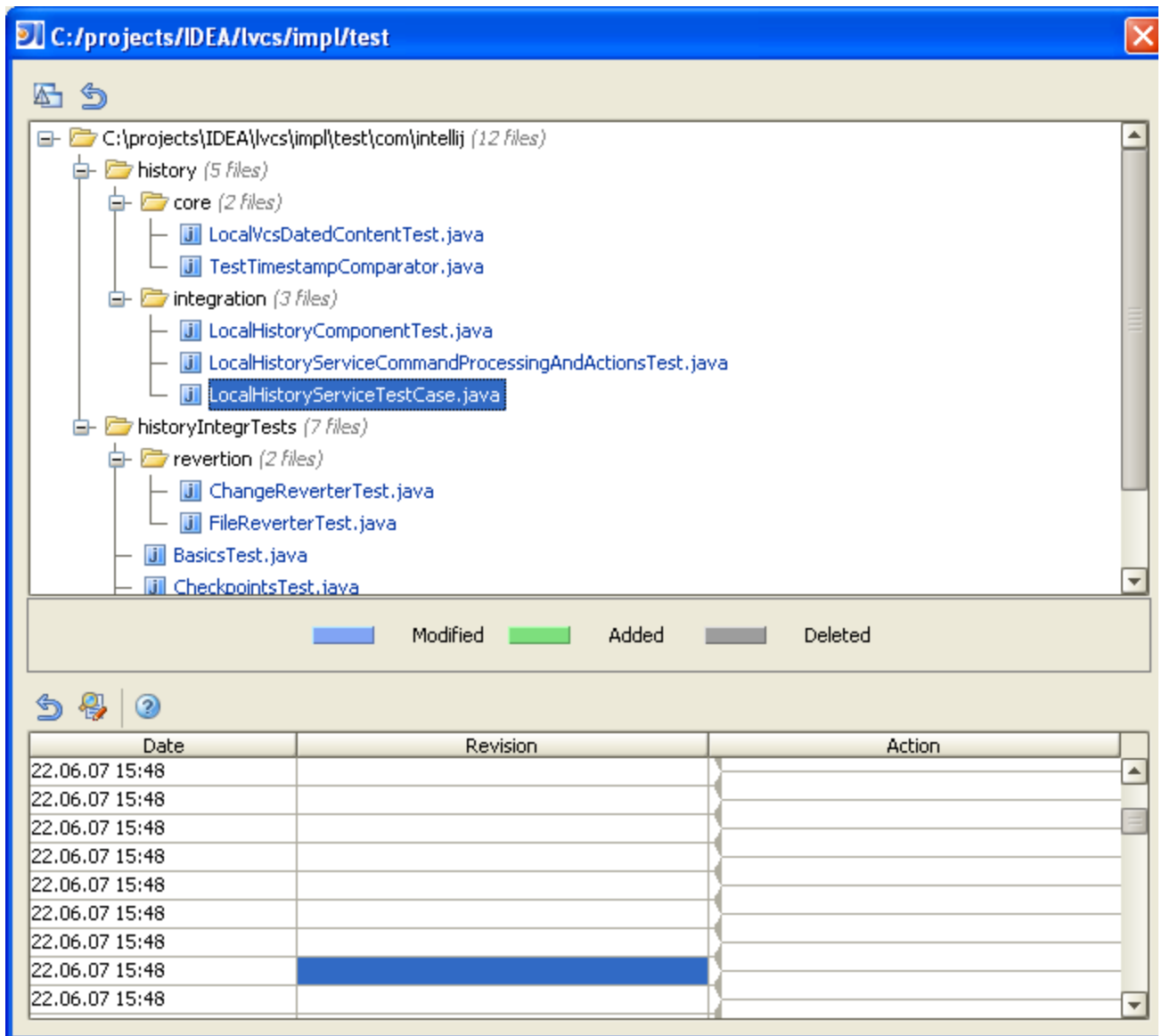
- Run/Debug configuration for running Maven (requires external Maven installation, useful for debugging). Work in progress, autogenerated configuration names are not very good.
- When running external Maven, stderr output intercepted as well as stdout
- Known problem: when importing multi-module project, module dependencies are not created if the modules' jars are not present in the local repository

Local History

- Progress bar during calculations in Selection History dialog

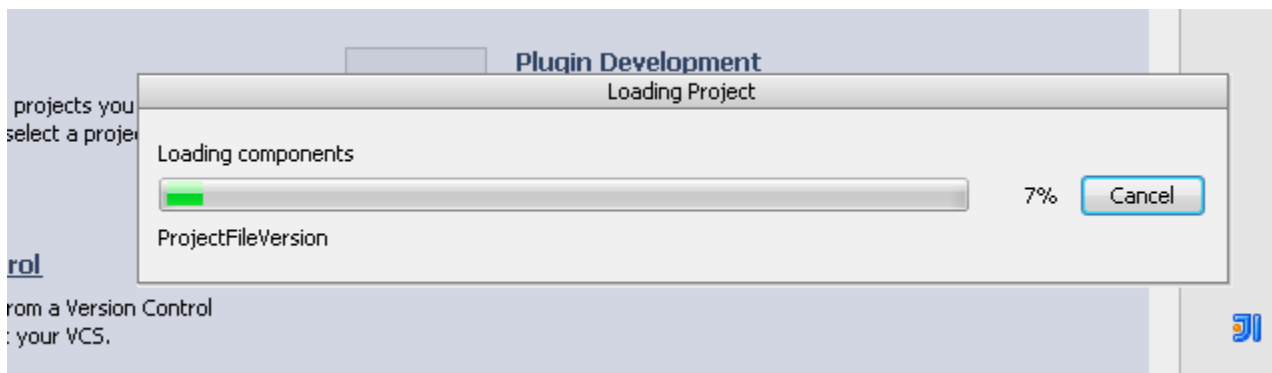


- New tree in Directory History and Recent Changes dialogs



General

Project loading can be canceled



Fix all problems in file

```

1 package foo;
2
3 public class Foo {
4     ... public void fool() {
5         ...     if (true) {
6             ...         System.out.println("Hello world");
7         ...     }
8         ...     if (true) {
9             ...         System.out.println("Hello world");
10        ...     }
11        ...     if (true) {
12            ...         System.out.println("Hello world");
13        ...     }
14        ...     }
15        ... }
16
17     ... public void foo2() {
18         ...     if (true) {
19             ...         System.out.println("Hello world");
20         ...     }
21         ...     if (true) {
22             ...         System.out.println("Hello world");
23         ...     }
24         ...     if (true) {
25             ...         System.out.println("Hello world");
26         ...     }
27         ...     if (true) {
28             ...         System.out.println("Hello world");
29         ...     }
30         ...     if (true) {
31             ...         System.out.println("Hello world");
32         ...     }
33     ... }
34 }

```

The image shows an IDE inspection menu for a 'Constant if statement' issue. The menu is open over the code on line 11. It contains two main sections:

- Simplify** (highlighted in blue):
 - Invert If Condition
 - Merge 'if's
- Constant if statement**:
 - Disable inspection
 - Edit inspection profile setting
 - Fix all 'Constant if statement' problems (highlighted in blue)
 - Suppress all inspections for class
 - Suppress for class
 - Suppress for method
 - Suppress for statement

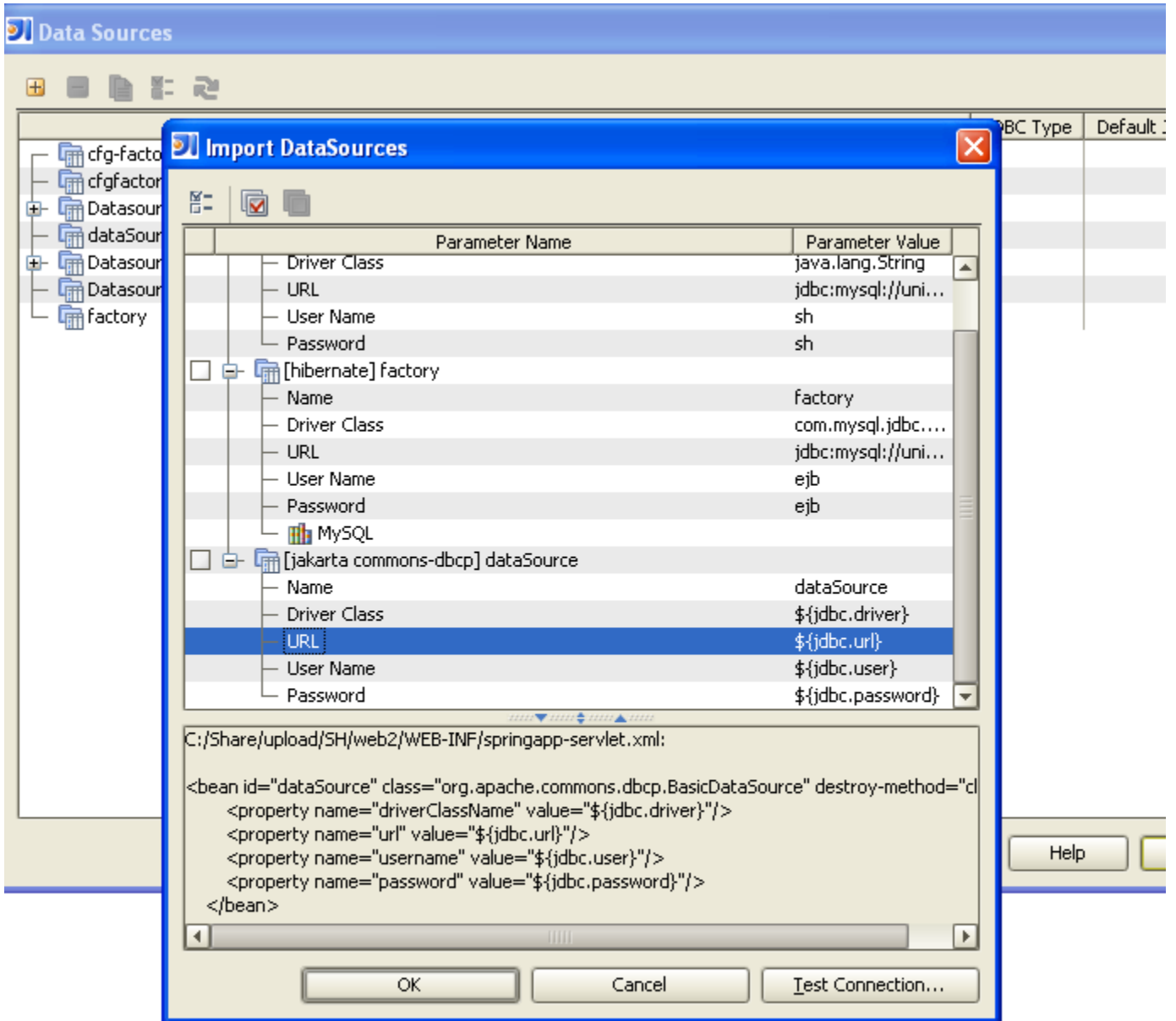
```

1 package foo;
2
3 public class Foo {
4     ... public void fool() {
5         ...     System.out.println("Hello world");
6         ...     System.out.println("Hello world");
7         ...     System.out.println("Hello world");
8         ...     System.out.println("Hello world");
9     ... }
10
11    ... public void foo2() {
12        ...     System.out.println("Hello world");
13        ...     System.out.println("Hello world");
14        ...     System.out.println("Hello world");
15        ...     System.out.println("Hello world");
16    ... }
17 }

```

->

DataSources can be imported from spring and hibernate configuration files



Generate Persistence Mapping actions create JPA Annotations/JPA xml/Hibernate hbm.xml

<input checked="" type="checkbox"/>		test_data	TestDataEntity	TestDataEntity
<input checked="" type="checkbox"/>		ID	id	int
<input checked="" type="checkbox"/>		user	UserEntity	UserEntity
<input checked="" type="checkbox"/>		ID	id	long
<input checked="" type="checkbox"/>		NAME	name	java.lang.String

Generation Settings

Add to Persistence Unit:

Generate Mapping XML:

Generate JPA Annotations

- JPA Mapping Descriptor
- Hibernate Mapping

Cancel

Help